



# INSTALLATION INSTRUCTIONS

## Part Number E-4142

This filter fits: **SEE CURRENT CATALOG FOR APPLICATIONS**

**\*FREE K&N DECAL** To register your warranty, please see us online at [knfilters.com/register](http://knfilters.com/register). **FREE K&N DECAL\***

**Congratulations, you have purchased the finest air filter money can buy. With proper care this air filter can last many seasons. This air filter is a direct replacement for the stock air filter and no modifications will be required. However, the following procedure MUST be followed to ensure a proper fit and seal of the air filter.**

1. Loosen the air cleaner assembly wing nut. (Fig. 1)
2. Remove the air cleaner cover and remove the stock air filter. (Fig. 2)
3. With a damp cloth, clean the air cleaner base and cover of any dust or debris.
4. Apply the provided K&N Sealing Grease to the inner groove on the air cleaner base. (Fig. 3)
5. Insert the provided adapter into the K&N Filtercharger if the air cleaner assembly requires a closed top air filter. (Fig. 4)
6. Install the K&N Filtercharger onto the air cleaner base. (Fig. 5)
7. Reinstall the stock air cleaner cover and tighten the stock wing nut. (Fig. 6)

Available to purchase separately  
Drycharger Wrap; E-4142DK

**THESE INSTRUCTIONS MUST BE FOLLOWED EVERY TIME THE FILTER IS SERVICED, OTHERWISE THE FILTER MAY NOT SEAL, AND DAMAGE TO THE ENGINE COULD RESULT.**

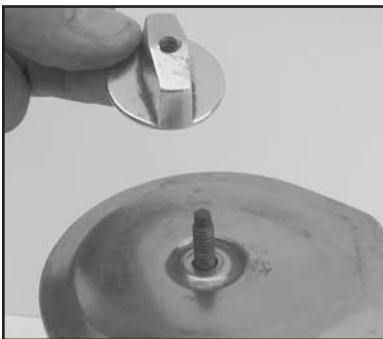


Fig. 1

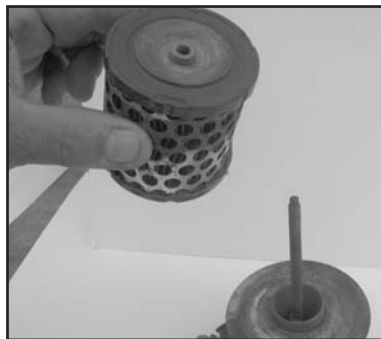


Fig. 2

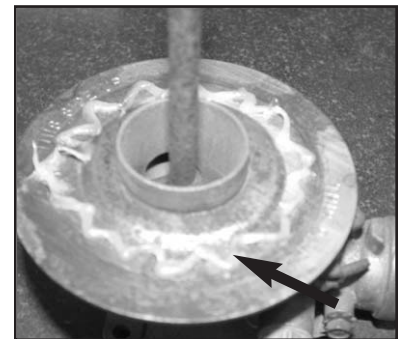


Fig. 3



Fig. 4



Fig. 5



Fig. 6